

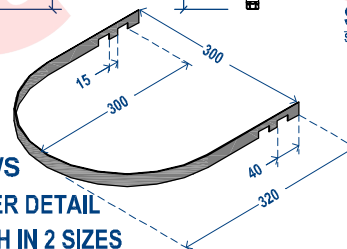
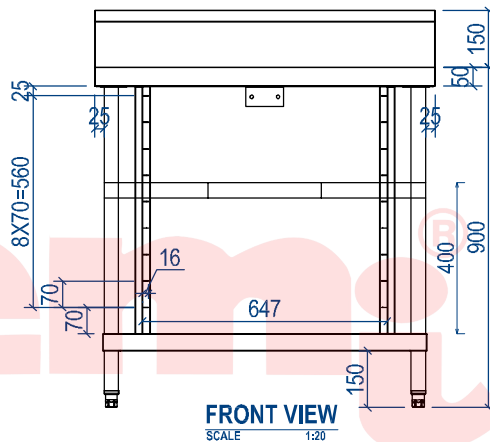
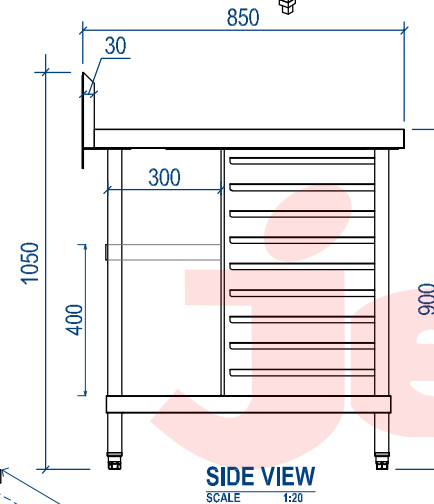
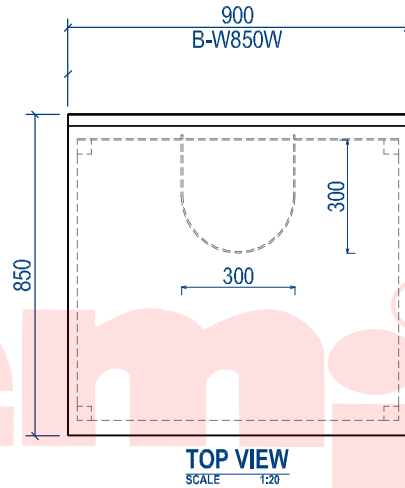
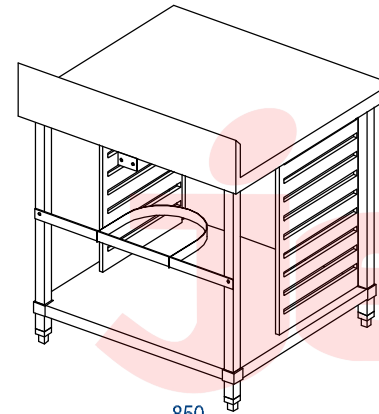


B-WB850W

COMPACT COMBI STAND WITH SPLASHBACK

Specifications

- GN tray racks at 70 mm distance Feet
- Adjustable stainless feet (60mm - 70mm)
- 38mm square tube legs Splash back
- 150mm H, 45° angle scaled back Fascia
- 50mm rolled back edge Under shelves
- Full Stainless under shelf and frames - all
- 1.2mm construction with 40mm fascia
- round Easy to assemble, Easy to Clean
- Bracket
- Fixing bracket to wall supplied
- Size: W 600 / 900 x D850 x H900 / 1050mm



MODEL	DIMENSIONS IN MM			EXTRA DESCRIPTION
	WIDTH (W)	DEPTH (D)	HEIGHT (H)	
B-WB850C	600	850	900 / 1050	GN TRAY RACKS AT 70 mm DISTANCE
B-WB850W	900	850	900 / 1050	GN TRAY RACKS AT 70 mm DISTANCE

THIS DRAWING MUST NOT
BE SCALED

THE CONTRACTOR SHALL VERIFY ALL
DIMENSIONS, DATA AND LEVEL PRIOR
TO THE COMMENCEMENT OF WORK.
ALL ERRORS AND OMISSIONS
BETWEEN THE DRAWINGS AND
SPECIFICATION ARE TO BE REPORTED
IMMEDIATELY.



-----© Copyright of Hospitality Equipment 2020 Pty. Ltd.-----



HE2020
HOSPITALITY EQUIPMENT 2020 PTY LTD
HOSPITALITY EQUIPMENT
2020 Pty. Ltd.

A: Unit 3/49-63 Victoria Street,
Smithfield NSW 2164
P: 02 9637 3737
E: salesnsw@he2020.com.au
W: www.he2020.com.au

COMMERCIAL KITCHEN CONSULTANT

DRAWING TITLE:

B-WB850W

DRAWN	DATE	SCALE	(A4)
L.	Sept. 23, 2021	1 : 20	
PROJECT NO.	DRAWING NO.	REV.	
001	A01	A1	